



Ultraclean sterile transfer solutions

FOR THE GLOBAL BIOPHARMACEUTICAL INDUSTRY



Your partner for ultraclean sterile transfer solutions in the global pharmaceutical industry

Co-development with pharma to better address unmet needs

ABC Transfer has been created by aseptic industry experts in co-development with pharma and isolator companies. This collaboration began with conducting a feasibility study which revealed more than 70 opportunities for improvement in Rapid Transfer Systems: GMP compliance, ease of cleaning, sterility assurance and ultra-cleanliness, lifecycle cost, maintenance, ergonomics, productivity, health and safety in production and social and environmental impacts, amongst others.



Thierry Girard

Thierry has 30 years' experience as an executive in mid-size industrial companies, including the pharmaceutical and medical device sectors, and managing complex international B2B relationships.



Jean-Luc Schneider

Jean-Luc has 25 years' experience as Product Manager, Design Office Manager and Industrial organization Manager.

Both Thierry and Jean-Luc have worked for the market leader of transfer technology in Vendôme (France). Thierry as President and Sales Manager for over 5 years and Jean-Luc as R&D Manager.

They have strong knowledges and background in the pharmaceutical industry and have complementary competencies (expertise) allowing them to structure the business development in the best conditions. Our new products are designed from scratch with the reference market but are compatible to the different RTP in the sector.

“

We have developed a range of high-quality Rapid Transfer Systems (RTS) solutions in cooperation with pharma companies. Patient safety, increased regulation, vital requirements for manufacturing new generation pharmaceutical drugs (cell therapy, nanopowders, new anticancer, etc.), automatization, plus other trends are among the many challenges the pharmaceutical industry has to address.

”

Thierry Girard & Jean-Luc Schneider

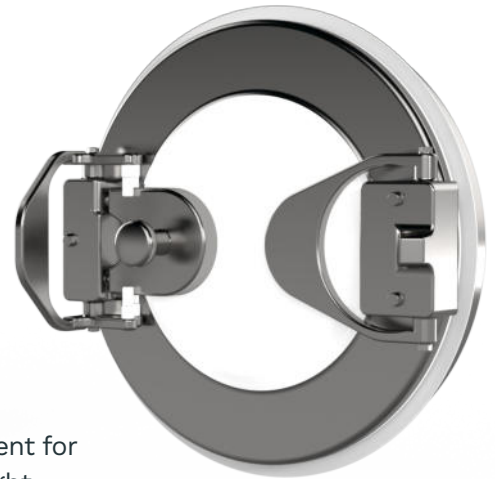


ABC Transfer[®] Alpha Port

A STEP CHANGE IN THE WORLD OF RAPID TRANSFERS

The ABC Transfer[®] Alpha Port has been designed to improve operational ergonomics, increase the level of sterility assurance in production, and simplify its maintenance. Although the port is manually operated, it is compatible with gloveless filling lines and can be operated by a robotic arm.

The ABC Transfer[®] Alpha Port comes in 2 versions : the Alpha Port, with an internal opening, and the Gloveless Alpha Port, with an external opening. Both can be integrated in single or double-wall isolators, including double glass-wall isolators.



GMP Design

○ Sterility assured

The utilization of our unique Easyglide™ seal removes the requirement for suction removal holes. The ABC Transfer[®] Alpha Port is 100% leak tight (4.5×10^{-3} std cm³/s at 4000 Pa).

One no longer need to worry about managing and validating unnecessary filters.

○ 0.5 µm surface rugosity

All surfaces exposed to the process feature a 0.5 µm surface rugosity. This includes the door, machined with 21 CFR and USP class VI PET.

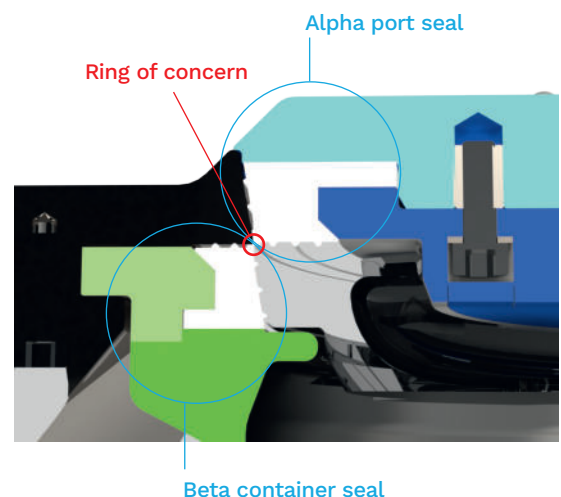
No Hidden Surfaces

○ Thorough cleansing allowed

The ABC Transfer[®] Alpha Port has been designed to ensure that production operators can easily clean every single square millimeter. This also guarantees that the H₂O₂ can easily reach every point and be quickly eliminated during a bio-decontamination cycle.

○ Reduced ring of concern

The Easyglide™ seal reduces the size of the ring of concern (only 119mm² on a 190 diameter) as well as the rotation torque. The Easyglide™ seal is firmly assembled between two rigid and fixed plates, making the ABC Transfer[®] Alpha Port easier and safer to operate.



Ergonomic and Safe

Four safety locks

In addition to the conventional Beta Container lock, Beta Container door presence lock, and Beta Container presence lock, ABC Transfer has added an interlock between the Alpha and the Beta door. The Beta door cannot jam the closure of the Alpha RTP or fall in the process.



Modular design for easy maintenance

Each module can be disassembled and reassembled with just one tool thanks to the standardization of the screws. The Alpha Easyglide™ seal can be exchanged in just 5 minutes, without any risk of misplacement or damage. With ABC Transfer, your maintenance crew has one less problem to worry about.



Door angle programmable opening between 90° and 180°

Because the integration of Alpha Ports in isolators is always complex, ABC Transfer has developed a unique “door angle programmable opening” feature. By the manual adjustment of a simple screw, you can set the maximum angle at which you want the door to open to between 90° and 180°. Integrating the ABC Transfer® Alpha Port next to a 90° glass wall is simplified.

The risk of damaging the isolator wall when the port is opened too forcefully is eliminated.

Compatible with conventional RTP brands

The ABC Transfer® Alpha Port is compatible with conventional RTP brands and fits in place of some of them. There is no need to de-standardize your isolator assembly process.

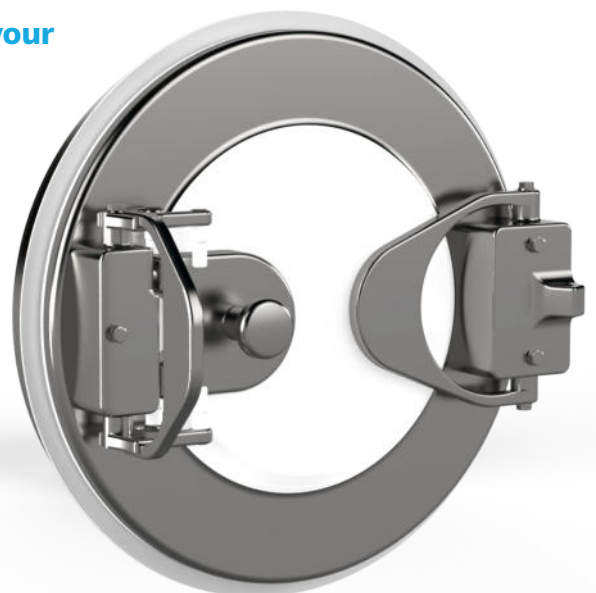
Alpha Port

With ABC Transfer, opening an Alpha Port from inside a machine has never been so easy. Regardless of its position on the isolator, the ABC Transfer® Alpha Port can be opened and closed with no effort. Your health and safety managers are happier and your quality managers have one less problem to worry about when conducting an inspection.

A unique opening and closing system

ABC Transfer has worked with ergonomics specialists and pharma production operators to design an opening and closing system similar to that of a cap bottle opener.

The hand and wrist motions are natural and effortless. The risk to the process sterility is thus reduced.



● **A customizable handle**

The ABC Transfer® Alpha Port handle can also be customized. As standard, it is provided in 316L stainless-steel materials. Its size and shape can be adapted to fit your specific requirements. It can also be operated by a robotic gripping tool.



● **Lighter than conventional RTP systems**

The 190 diameter weighs only 12 kg and produces 25 kg CO₂ less during its manufacturing process than conventional RTP brands. It is therefore not only easier for isolator assembly operators to integrate the ABC Alpha Port, but also cleaner for the environment.

Gloveless Alpha Port ...a dream come true

Although the idea of opening an Alpha Port from the outside of an isolator is not new, the innovative and simple approach adopted by ABC Transfer is. This is possible because we have gone back to the drawing board to design our Alpha Port.



● **Reduced risks of particulate or biological contamination aligned with GMP**

The ability to open and close your RTP from outside the isolator greatly reduces operator interference with the laminar flow inside the isolator, and therefore reduces the risk of particulate or biological contamination.

● **More ergonomic process**

Which reduces operator fatigue and therefore operator errors in production.



● **Simplified validation process**

The manual operation of the ABC Transfer® Gloveless Alpha Port removes the complexity of bringing utilities to the RTP and simplifies the process validation. It is simple to install, simple to validate, simple to operate, and simple to maintain.

● **Possibility to upgrade an Alpha Port to a Gloveless Alpha Port**

Thanks to the modularity of the ABC Transfer® Gloveless Alpha Port, the levers can be customized to fit your specific requirements. It is even possible to upgrade an ABC Transfer® Alpha Port to an ABC Transfer® Gloveless Alpha Port, at your factory!

Double Wall Isolator Assembly

The introduction of double-wall isolators, in particular glass wall isolators, has provided customers with many operational and regulatory benefits. Conventional RTPs were designed at a time when this isolator technology did not yet exist.

ABC Transfer has designed their RTP range to be integrated on double-wall as well as on single-wall isolators.

Alpha Port built in 2 separate bodies

One body is installed inside the isolator while the second body is integrated outside the isolator. A channel, specific to each isolator brand, ensures the connection and leak tightness of the system, which is fixed to the outside wall.

- No need to build a complicated stainless-steel plate on your isolator wall to accommodate your RTP. Airflow re-circulation is simplified. Process visibility is greatly improved. Cleaning and maintenance are simplified.

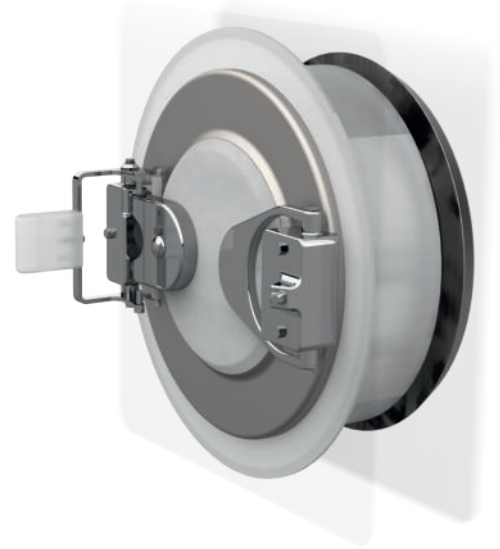
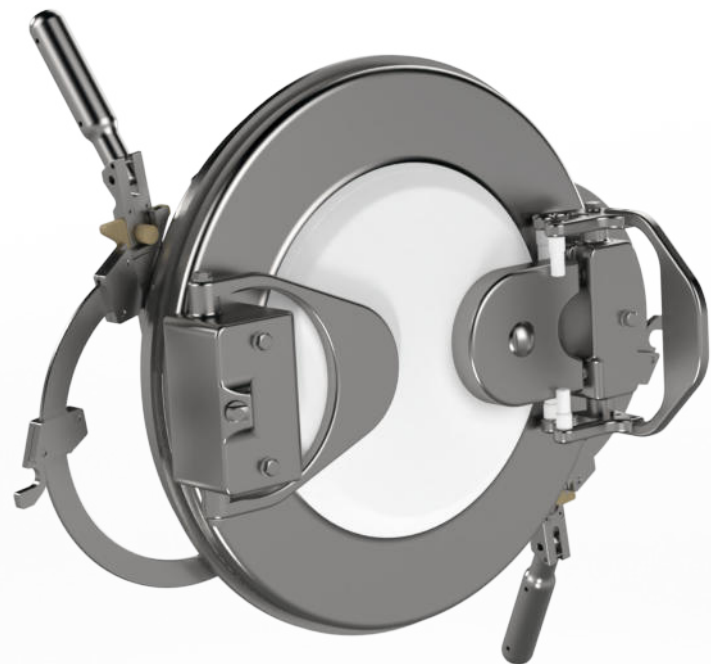


Compatibility with other options

The ABC Transfer Double Wall Isolator Assembly is compatible with the internal opening and external opening options, as well as with the ABC Transfer range of Beta Containers and Betacleanbag™.

Discover our new external opening Alpha Port

- Open and close the Alpha Port from **outside** isolator
- No motor, solely **mechanical** gearbox-based transfer system
- Foldable handles** locking door in closed/open position
- Stainless-steel **GMP** and **ergonomic** internal handle
- Determine door opening angle



The ABC Transfer brand

70 identified opportunities for improvement

- GMP compliance, patient safety
- GMP compliance, Ultra-cleanliness
- Ergonomy, Operations
- Ergonomy, Maintenance
- Industry responsibility, continuity of supply
- Environmental Responsibility, raw materials consumption
- Social Responsibility, endocrine disruptors

A brand for sterile processes

- GMP & USP Class 6 compliance
- Ultracleanliness & Performance
- Ergonomy and risk reduction
- Future proof design
- Environmental and Social responsibility

Environnemental & Social responsibility

From design to recycling, we prioritize lowering the environmental impact of our products:

- No Bisphenols and no Phtalates in our single-use ported bags
- 50% fewer plastics
- 30% less stainless steel
- All our products are 100% recyclable

Fighting global warming by offsetting our carbon footprint

More can be done to reduce our impact on the environment. ABC Transfer has subscribed to an environmental program, Reforest'Action, to compensate for our residual carbon emissions. That program is executed in France and its timely implementation is permanently controlled.





HEADQUARTER for all geographic areas

Mr. Thierry Girard
ABC TRANSFER
5 Rue Thérèse Planiol
37170 Chambray-lès-Tours - France
+33 (0)2 47 39 90 01
sales@abctransfer.fr

SPAIN AND PORTUGAL DISTRIBUTOR

Mr. Alfred Terés
ASEPTIC MIND 4.0 S.L
Carrer Gaudí 8, Office 3
08221. Terrassa (Barcelona) - Spain
+34 638863133
ateres@asepticmind.com

GREECE DISTRIBUTOR

Mr. John Gkonis
VIMACHEM
49 Pigis Avenue Melissa
Athens 15127 - Greece
+30 2106095602
john.gkonis@vimachem.com

INDIA DISTRIBUTOR

Mr. Sameer Maheshwari
SAKSHAM TECHNOLOGIES Pvt. Ltd.
108-110, Agarwal B2B Commercial Centre,
Dhruv Park, Off Link Road, Kanchpada, Malad (W),
400 064 Mumbai - India
+91 2269052500
sameer@saksham.co.in

EGYPT AGENT

Mr. Ahmad Nabil
NOVA ENGINEERING
Administrative Building No. 5, Zizania Resort
Fifth Settlement, New Cairo - Egypt
+39 3283795505
a.nabil@nova-egypt.com

JAPAN DISTRIBUTOR

Mr. Yoshisada Hirabe
STERI JAPAN Co., Ltd.
Gotanda Fujikoshi Building 8F, 5-23-7 Higashi-Gotanda
Shinagawa-su, Tokyo 141-022, Japan
+81 354201147
ysamhirabe@steri-japan.jp

CHINA DISTRIBUTOR

Mr. Chihyao Hsu
JEREMPLI (Shanghai) Trading Co., Ltd.
Room 617, 6F., No. 89, Jilong Road,
Pudong New Area, 200131, Shanghai,
People's Republic of China
+86 13601814898
jerry.hsu@jerempli.com

TAIWAN DISTRIBUTOR

Mr. Chihyao Hsu
**JEREMPLI (Taipei) Co.,
Ltd.**11F, No. 1, Sonzhi Road,
Xinyi District, Taipei city, 11047, Taiwan (R.O.C.)
+886 911777343
jerry.hsu@jerempli.com

SOUTH KOREA DISTRIBUTOR

Mr. Thomas YM Kang
SUNPAC CORPORATION
8-211, International Distribution Complex
92 LS-ro, Dongan-gu, Anyang-si, Gyeonggi-do, 14117 -Korea
+82 314795840
thomas_kang@sunpac.co.kr

SOUTH EAST ASIA DISTRIBUTOR

Mr. Robin Owh
REPASSA SINGAPORE PTE LTD
City Warehouse, #01-05,
416839, 5 Kaki Bukit Rd 2, 417839 Singapore
+65 91099115
robin@repassa.com

